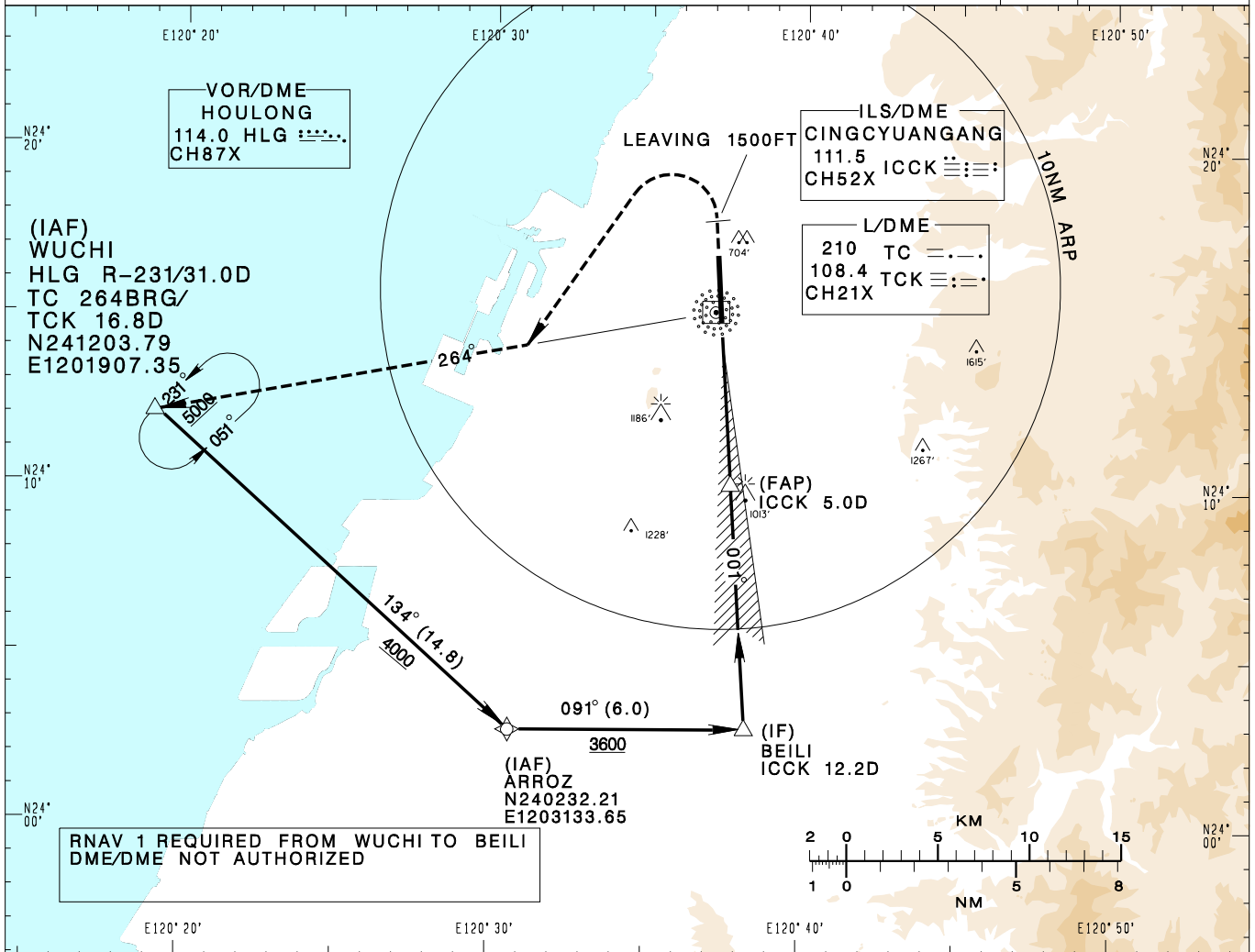


**臺中/清泉崗機場**  
TAICHUNG/CINGCYUANGANG AD

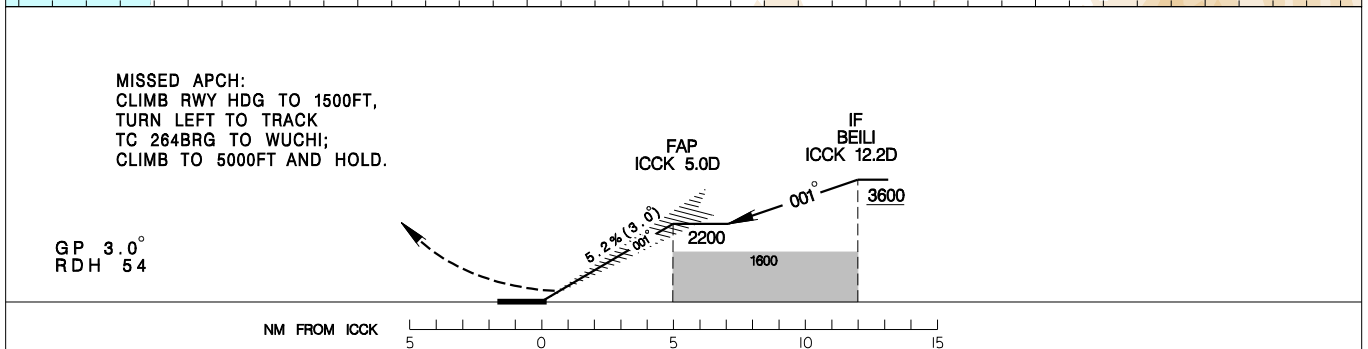
RCMQ  
ILS Y RWY36

TAIPEI APP 130.1 129.6	TAICHUNG TWR 118.75 120.25	ATIS 127.75	 VAR 5°W-2022 MSA ARP 25NM
Apt Elev: 665' Rwy36 THR Elev: 663' Trans Level: FL130 Trans Alt: 11,000'			
BEARINGS ARE MAGNETIC; DISTANCES ARE NAUTICAL MILES; ELEVATIONS, HEIGHTS IN FEET			



RNAV 1 REQUIRED FROM WUCHI TO BEILI  
DME/DME NOT AUTHORIZED

MISSED APCH:  
CLIMB RWY HDG TO 1500FT,  
TURN LEFT TO TRACK  
TC 264BRG TO WUCHI;  
CLIMB TO 5000FT AND HOLD.



MINIMA (OCA IN FT, VIS IN M, OCH IN FT)					NOTE 1. CIRCLING NOT AUTHORIZED EAST OF RWY. 2. ⊕: APPROACH IS FLOWN USING A FLIGHT DIRECTOR, HUD OR COUPLED TO AN AUTOPILOT.  *DME REQUIRED.
CATEGORY	A	B	C	D	
STRAIGHT IN	863/RVR <sup>800</sup> 750 200	863/RVR <sup>800</sup> 750 200	863/RVR <sup>800</sup> 750 200	863/RVR <sup>800</sup> 750 200	
STRAIGHT IN ⊕	863/RVR 550 200	863/RVR 550 200	863/RVR 550 200	863/RVR 550 200	
STRAIGHT IN (ALS OUT)	863/RVR <sup>1200</sup> 1200 200	863/RVR <sup>1200</sup> 1200 200	863/RVR <sup>1200</sup> 1200 200	863/RVR <sup>1200</sup> 1200 200	
CIRCLING	1360/1900 695	1360/2800 695	1600/4400 935	1600/4800 935	

CHANGES: NEW PROC